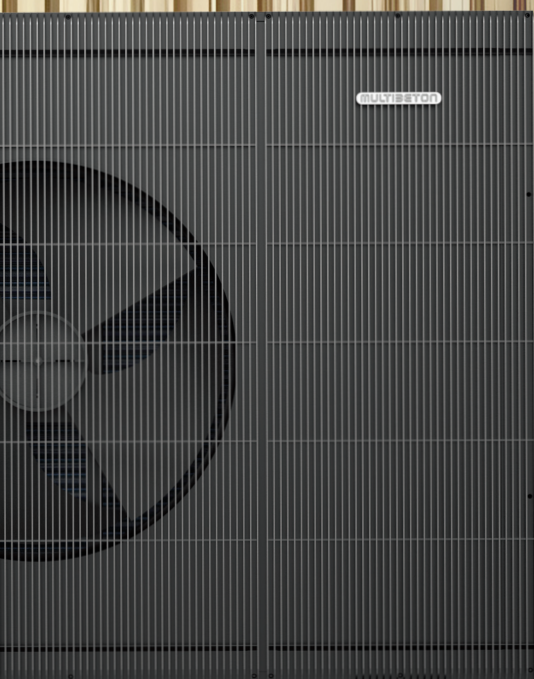


| | |
|---|----------------|
| Heat pumps & hydraulic station | 01 - 02 |
| The outdoor and indoor units | |
| System storage | 03 |
| for heating, hot water, and domestic water | |
| Pump groups | 04 - 05 |
| Heat and cooling distribution | |
| Pump group accessories | 06 |
| Accessories for heat and cooling distribution | |
| Water treatment | 07 - 08 |
| for cooling water and heating water circuits | |
| Outdoor/indoor connections | 09 |
| Floor pipes and accessories | |
| Additional accessories | 10 |





Warmondo WM-S und WM-M

Warmondo air-to-water heat pumps from MULTIBETON achieve the same efficiency levels in buildings with radiators as other air-to-water heat pumps in new buildings with underfloor heating. This is ensured by various technical refinements and innovations:

- Innovative optimisation of fluid dynamics
- Double structure-borne sound decoupling
- Pressure-loss-optimised evaporator geometry
- Demand-based and predictive speed control (inverter)

The natural refrigerant propane (R290) used in the Warmondo heat pump is characterised by its excellent environmental profile and extremely low carbon footprint. It fully complies with the environmental requirements of the F-Gas Regulation.



Warmondo WM-L und WM-XL

| | | |
|-------------------|-----------------------|-------|
| WP000061-1 | Warmondo WM-S | 6 kW |
| WP000091-1 | Warmondo WM-M | 9 kW |
| WP000133-1 | Warmondo WM-L | 13 kW |
| WP000163-1 | Warmondo WM-XL | 16 kW |

Scope of Delivery: Installation manual, energy label, vibration dampers, drain flange, carrying strap incl. mounting material;



Warmondo WM-HDS

The hydraulic station is equipped with a touch controller, additional flow control components, a 3-way valve and sensors. The hydraulic station allows for direct connection to the heating system and optimises the hydraulic balancing of the entire system. Its modular design enables high installation flexibility, reduced installation effort, and system-optimised flow control.

| | | |
|-------------------|------------------------|------|
| WP000013-1 | Warmondo WM-HDS | 9 kW |
|-------------------|------------------------|------|

Technical Specifications

Heat pump

Performance rating (A2/W35)
 Rated heating capacity (EN 14511)
 SCOP (EN 14825)
 Energy efficiency class (EN 14825)
 Sound pressure level at 1 m

Heating

Heating capacity (A2/W35)
 Power consumption
 Operating current
 Max. power consumption
 Max. operating current
 Max. supply water temperature
 Outdoor temperature

Power supply
 Nominal water flow rate
 Compressor
 Circulation pump
 Water heat exchanger
 Air heat exchanger
 Fan/fan motor
 Controller

Refrigerant
 Supply/return connections
 Protection rating
 Protection class
 Net weight
 Unit dimensions (L x W x H)

Cooling

Cooling capacity
 Power consumption
 Operating current
 EER

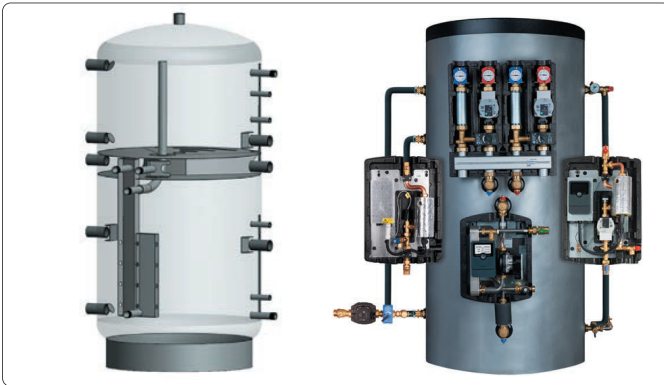
| | WM-S | WM-M | WM-L | WM-XL |
|------------------------------------|---|------------------------|------------------------|------------------------|
| Performance rating (A2/W35) | 6 kW | 9 kW | 13 kW | 16 kW |
| Rated heating capacity (EN 14511) | 4.9 kW | 7.1 kW | 10.0 kW | 12.9 kW |
| SCOP (EN 14825) | 5.08 | 5.05 | 5.05 | 5.07 |
| Energy efficiency class (EN 14825) | A+++/A++ | | | |
| Sound pressure level at 1 m | 31 dB(A) | 38 dB(A) | 39 dB(A) | 38 dB(A) |
| Heating capacity (A2/W35) | 5.97 kW | 8.48 kW | 12.76 kW | 15.28 kW |
| Power consumption | 1.51 kW | 2.20 kW | 3.30 kW | 4.04 kW |
| Operating current | 6.67 A | 9.40 A | 4.83 A | 5.93 A |
| Max. power consumption | 2.80 kW | 4.50 kW | 5.40 kW | 5.80 kW |
| Max. operating current | 14.40 A | 19.80 A | 8.25 A | 8.90 A |
| Max. supply water temperature | 75 °C | | | |
| Outdoor temperature | -25 to +43 °C | | | |
| Power supply | 230 V/1~/50 Hz | 230 V/1~/50 Hz | 400 V/3~/50 Hz | 400 V/3~/50 Hz |
| Nominal water flow rate | 1.03 m ³ /h | 1.55 m ³ /h | 2.20 m ³ /h | 2.75 m ³ /h |
| Compressor | MITSUBISHI® reciprocating compressor | | | |
| Circulation pump | Wilo® Para direct current | | | |
| Water heat exchanger | Brazen plate heat exchanger (BPHE) | | | |
| Air heat exchanger | Copper tube heat exchanger with aluminum fins (CTAFC) | | | |
| Fan/fan motor | Axial/DC | | | |
| Controller | 7-inch IPS 600×1024 color touchscreen display | | | |
| Refrigerant | R290 | | | |
| Supply/return connections | 5/4" | | | |
| Protection rating | IPX4 | | | |
| Protection class | I | | | |
| Net weight | 146 kg | 160 kg | 205 kg | 212 kg |
| Unit dimensions (L x W x H) | 1,102 × 557 × 1,021 mm | | 1,377 × 557 × 1,021 mm | |
| Cooling capacity | 4.91 kW | 6.96 kW | 9.13 kW | 11.80 kW |
| Power consumption | 1.60 kW | 2.23 kW | 2.99 kW | 3.78 kW |
| Operating current | 7.03 A | 9.79 A | 4.55 A | 5.81 A |
| EER | 4.32 | 4.31 | 4.34 | 4.38 |

Hydraulic station

Max. heating capacity
 Power supply
 Max. operating current
 Max. flow temperature
 Connections for supply/return
 Connections for domestic hot water
 Connections for heating water
 Sound pressure level at 1 m
 Unit dimensions (L x W x H)
 Net weight
 Protection rating
 Protection class

WM-HDS

9 kW
 400 V/3~/50 Hz
 13.7 A
 75 °C
 5/4"
 1"
 1"
 30 dB(A)
 418 × 310 × 750 mm
 35 kg
 IPX1
 I



tubra®-system storage

The all-in-one storage tank for heating, hot water, PV heat, heat pumps, biomass, and solar. Various heat generators can be connected to this universal system storage tank. It is ideally suited for hybrid heating systems combining conventional heat generators and heat pumps.

- System reliability with optimal energy utilization thanks to a stratified flow-through chimney for the heating circuit return
- Power-to-heat stratified charging – the storage tank is 100% stratified
- Space-saving installation
- Low installation effort due to internal piping
- Optimally coordinated components

| | | |
|----------------------|--------------------------------------|-------|
| WP010000.500 | tubra system storage PFW 500 | 480 l |
| WP010000.800 | tubra system storage PFW 800 | 718 l |
| WP010000.1000 | tubra system storage PFW 1000 | 887 l |



tubra®-WP-DUO 300/100

Power center for heat pump systems

- No mixing thanks to the separation of hot water and heating buffers, ensuring high annual performance factors for the heat pump
- Hot water heating via a fresh water station, providing high hot water comfort and hygiene at a buffer temperature of just 50 °C
- Hot water protection zone for consistently high hot water comfort via a stratification plate
- Compact design and low weight

| | | |
|------------------|-----------------------------|------------|
| WP0100100 | tubra WP-Duo 300/100 | 306 l/95 l |
|------------------|-----------------------------|------------|



Heat Pump Cold Buffer Tank WPPS

The WPPS is a compact, robust buffer tank developed specifically for use with heat pumps. It combines cost-effectiveness, functionality and a well-thought-out design – ideal for stable hydraulics and efficient operation of the heat pump system.

- Inner tank made of sheet steel St 37
- Operating pressure: 6 bar (for WPPS 130: 3 bar)
- PU insulation: 50 mm direct-foamed polyurethane foam
- Outer casing: Powder-coated sheet steel, silver-grey
- Flange: Ø 180 mm with mounted blind flange + insulating cap (e.g. for finned tube heat exchanger or built-in heater)
- 6/4" socket for installation of an electric heater or additional connections
- Male thread connections and reinforced outer casing by flanging
- For cooling operation (cold buffer): connection area and flange must be insulated in a diffusion-tight manner on site

| | | |
|------------------|----------------------------------|-------|
| WP0100100 | WPPS Cold Buffer Tank 130 | 130 l |
|------------------|----------------------------------|-------|



tubra®-PGR pump unit without mixer

With wall mount, 35 kW (ΔT 10 K), 70 kW (ΔT 20 K)

- WPO20000** **tubra PGR DN 25** with Wilo Para 25/6 SCU
- WPO20010** **tubra PGR DN 32** with Wilo Para 25/8 SCU



tubra®-PGM pump unit with mixer

With 3-way mixer, constant-temperature control, and wall mount

- k_{vs} 8: 35 kW (ΔT 10 K), 70 kW (ΔT 20 K)
- WPO20100** **tubra PGM DN 25** with Wilo Para 25/6 SCU
- WPO20110** **tubra PGM DN 32** with Wilo Para 25/8 SCU



tubra®-PGR pump unit with mixer & magnetic separator

With wall mount, 35 kW (ΔT 10 K), 70 kW (ΔT 20 K)

- WPO20200** **tubra PGR D DN 25**
with Wilo Para 25/6 SCU
- WPO20210** **tubra PGR D DN 32**
with Wilo Para 25/8 SCU



tubra®-nemux S/M

Electronically controlled fresh water station with many options, such as circulation programs, cascade function with up to 4 stations, and hygiene programs.

- WPO21000** **tubra nemux S** 70 kW, copper
- WPO21001** **tubra nemux S VE** 70 kW, stainless steel
- WPO21010** **tubra nemux M** 100 kW, copper
- WPO21011** **tubra nemux M VE** 100 kW, stainless steel



tubra®-Zirku-Set
Circulation kit with circulation pump, shut-off ball valve, flushing valve, gravity brake, and immersion sleeve, including a Pt1000 temperature sensor.
WPO21090 **tubra Zirku-Set** with Wilo Para Z



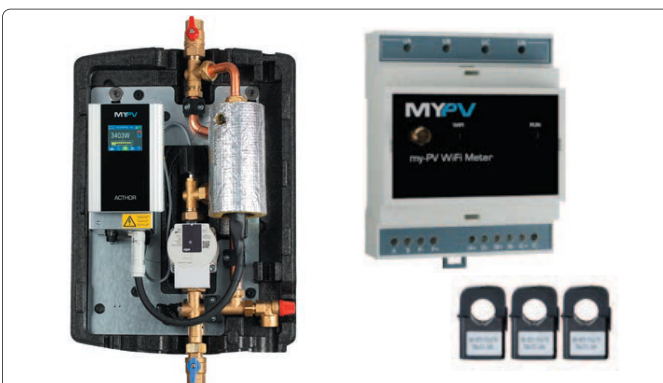
tubra®-eTherm C 3/C 9
3 kW or 9 kW electric boiler with target temperature control and a reheating thermostat for use as an external buffer tank charger powered by electricity. Can be used as a 3 kW or 9 kW Power-to-Heat hydraulic module for external power electronics such as Fronius Ohmpilot, my-PV AC: Thor, Elios4You, SMA Sunny Home Manager, and others.
WPO22000 **tubra eTherm C 3** 3 kW
WPO22030 **tubra eTherm C 9** 9 kW



tubra®-eTherm S
Set consisting of power electronics, a sensor unit including current clamps, and a 3 kW electric heating element
WPO22010 **tubra eTherm S**



tubra®-eTherm P
Hydraulic unit with integrated control and modulating power electronics, featuring a sensor unit for measuring excess photovoltaic power for thermal storage in buffer tanks. Internal heating capacity: 0 – 3 kW, expandable to 12 kW with external heating units
WPO22020 **tubra eTherm P**



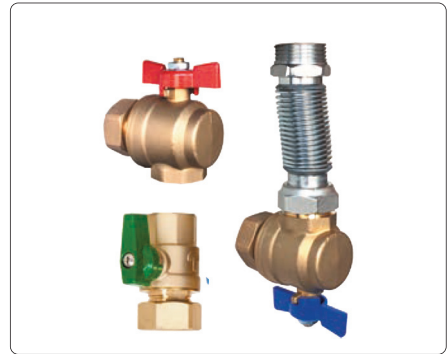
tubra®-eTherm AC-THOR 9s
The tubra®-eTherm AC-THOR 9s is a hydraulic unit with integrated control. Using my-PV's AC-THOR 9s power electronics, it converts excess photovoltaic power into heat and stores the energy generated to optimize self-consumption.
WPO22040 **tubra eTherm AC-THOR 9s**
my-PV WiFi Meter
Analyses the energy flows of the system and transmits the information on excess power to the photovoltaic power manager AC-THOR 9s. Incl. 3 clamp-on current transformers up to 3 x 75 A (52 kW).
WPO22041 **my-PV Wifi Meter**



tubra®-VM St DN 25
Steel manifold, closed design for up to 5 heating circuits, DN 25, center-to-center distance 125 mm, compatible with tubra®-PGM/PGR with zinc-lamella coating
WP040000 VM St DN 25



tubra®-Corner ball valve
Single unit, includes insulation sleeve, wing handles in red and blue
WP040010 Corner ball valve



tubra®-Corner ball valve set
Inlet G1 - Outlet G1
WP040100 Corner ball valve set



Storage tank connection set
For direct installation on the system storage tank
WP040150 Storage tank connection set



tubra®-mag-jet
Magnetite separators for retrofitting pump units
WP040200 MAG-jet DN 20



tubra®-mag-jet Replacement magnetic chain
For installation in mag-jet DN 20/25 and hydraulic diverters DN 25/32
WP040201 Replacement magnetic chain



tubra®-aero-fix
System vent for fresh water buffer tanks and system storage tanks; connects to the top center of the system storage tank; includes a reducer for a G1 1/4 female thread
WP040202 Aero-fix



tubra®-Security Group
Includes shut-off ball valve, pressure gauge, and 3-bar safety valve
WP040203 Security Group



tubra®-MAG connection
Cross fitting with shut-off ball valve, boiler filling and drain valve, and expansion tank connection
WP040204 MAG connection



elector Test kit

The measurement kit for on-site analysis of heating and cooling water for pH, electrical conductivity, and total hardness.

- Reliable measurement results with simple and intuitive operation.
- Complies with the functional recommendations of VDI Guideline 2035 for heating water analysers.
- Determination of total hardness using a proven drop test.
- Robust pH sensor, calibratable with buffer solutions pH 7.00 and pH 10.00, in accordance with guideline requirements.
- Sturdy conductivity sensor, low-maintenance and easy to calibrate.
- Measurement display with automatic temperature compensation.
- Functional plastic case with contoured foam to protect all parts during storage and transport.

WP030000 elector Test kit
includes MP-7 combination meter

elector Heating water analysis in the laboratory

Heating water analysis in accordance with VDI 2035 and DIN 50930-6, including interpretation of measured values and recommendations for action.

Measured values: Colour, odour, suspended solids, deposits, pH value, electrical conductivity, calcium, magnesium, total alkaline earth metals, total hardness, carbonate hardness, base capacity up to pH 8.2 (K_{B8.2}), acid capacity up to pH 4.3 (K_{S4.3}), acid capacity up to pH 8.2 (K_{S8.2}), sodium, chloride, nitrate, sulphate, phosphate (as P), silicate (as Si), aluminium, iron, copper, zinc, total organic carbon (TOC)

WP030001 Heating water analysis



elector Corrosion protection devices

Reaction tank for electrochemical water treatment to prevent corrosion in heating and cooling systems with a system volume of up to 1.5 m³.

- Stabilizes the pH level to ensure the formation of a protective layer on the metals in the system.
- Continuously consumes dissolved oxygen, which is thus no longer available to cause corrosion.
- Removes magnetic particles via an ultra-strong neodymium magnetic filter rod, thereby helping to protect sensitive components.
- Effectively removes circulating sludge and particles for clean system water.
- Collects and removes circulating air bubbles to prevent malfunctions and corrosion.

WP030100 elector XS5-V (full flow)

System volume: 0.5 m³

Shipping weight: 11 kg

WP030101 elector XS5-B (bypass)

System volume: 0.5 m³

Shipping weight: 13 kg

WP030110 elector S10-V (full flow)

System volume: 1.5 m³

Shipping weight: 17 kg

WP030111 elector S10-B (bypass)

System volume: 1.5 m³

Shipping weight: 18.5 kg



CLARIMAX Water filtration system

The water filtration system with replaceable cartridges delivers top-quality fully demineralized water for refilling heating and cooling systems.

- Suitable for refilling technical water circuits in fixed installations or as a mobile service cartridge.
- The water filtration system with replaceable cartridges eliminates the time-consuming and tedious replacement of ion exchange resins.
- Consistently top-quality resin, as there is no contamination of the resins due to unintended contact.
- Includes mounting bracket for wall installation and DVGW-certified backflow preventers in accordance with DIN EN 13959.

WP030200

CLARIMAX Water filtration system

Water filtration system, including filter cartridge, filter head, mounting bracket, and backflow preventer.

Capacity: 0.34 m³

Flow rate: 60 l/h

WP030201

CLARIMAX Filter cartridge

WP030202

Reducing Fitting Set 3/4" x 3/8"

WP030203

Backflow Preventer 3/8"



WP030204

Boiler-filling combination unit

with system separator type 1/2" female x 1/2" male, type BA



Measurement Computer

Measuring instrument for monitoring conductivity and capacitance

WP030210

Measurement Computer H2O



CLARIMAX 1200 DM+LED

Premium total desalination of make-up and top-off water for heating and cooling systems with pH control and cartridge technology

- High-quality ion-exchange resin in a replaceable cartridge with a high proportion of anion resin for reliable total desalination at a controlled pH level.
- Low electrical conductivity, low total hardness at an ideal pH value for low-salt operation of heating systems in accordance with VDI 2035.
- Extremely easy operation thanks to replaceable cartridges, eliminating the need for time-consuming resin replacement.
- Integrated conductivity and capacity monitoring.
- Robust design makes it suitable both as a service water filtration system and for on-site installation.

WP030250

CLARIMAX 1200 DM+LED

Capacity: 1.24 m³

Flow rate: 5 l/min

WP030251

Filter cartridge

WP030252

AC adapter

WP030253

Flush valve with hose

WP030254

Armored hose

3/4", 250 cm



WP050000

Ground wires 160

160 mm – 2 x 32 mm PEX pipes and
32/25 mm conduit pipes
Weight: 2.84 kg/m
Flow rate: 1.078 l/min
Heat capacity: 30 – 60 kW

WP050001

Ground wires 200

200 mm – 2 x 40 mm PEX pipes and
40/32 mm conduit pipes
Weight: 3.50 kg/m
Flow rate: 1.670 l/min
Heat capacity: 40 – 100 kW

Ground wires - HP insulated

- Central pipe for heating: PE-Xa/SDR 11/PN 6
- Continuous operating temperature: 80°C
- Maximum operating temperature: 95°C
- EVOH vapor diffusion barrier in accordance with ISO 17455
- Pipes color-coded (red and blue) to ensure correct installation
- Black insulating pipe made of UV-resistant HDPE



Threaded coupling

PE-X threaded coupling 32 mm 1" male

WP050010 Threaded coupling 32

PE-X threaded coupling 40 mm 1 1/4" male

WP050011 Threaded coupling 40



Dust cap

Dust cap 160 mm 4 x 32 mm

WP050020 Dust cap 160

Dust cap 200 mm 2 x 40 mm + 2 x 32 mm

WP050021 Dust cap 200



Mounting point

1" I-A

WP050030 Mounting point 1"

1 1/4" I-A

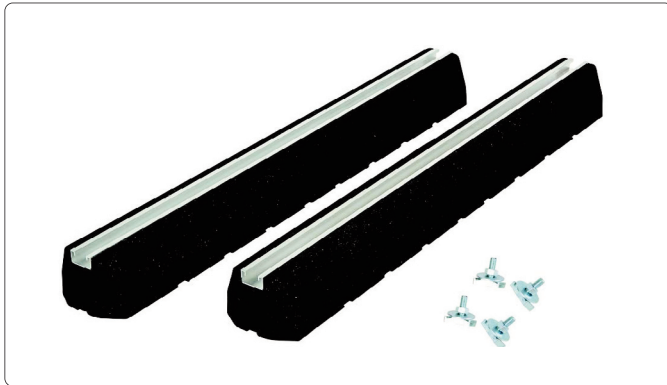
WP050031 Mounting point 1 1/4"



Quadruple compression cap

WP050029 Compression cap

The illustration and design are non-binding and only exemplary.



WP060000

Base100

L x W x H: 600 x 135 x 100 mm
Load capacity: 195 kg

WP060001

Base 150

L x W x H: 600 x 200 x 150 mm
Load capacity: 300 kg

WP060002

Base 230

L x W x H: 600 x 200 x 230 mm
Load capacity: 300 kg

WP060003

Insert screws

Set of insert screws
(2 pieces) M10 x 30 mm

Base

The bases are made of recycled SBR rubber and feature a recessed 40 x 21 mm aluminium profile; the mounting kit includes M10 x 30 mm screws for securing the mounting hardware.



Power distribution

Ready-to-connect distribution board for quick and easy heat pump installation; Complete with protection for: outdoor unit, indoor unit, supplementary heating element, and control circuits

- Rated current 40 A
- Maximum safety thanks to integrated residual current circuit breaker (RCCB) type B G/KV
- Heat pump protection via surge arrester type T2
- Consumption data always in view thanks to MID-certified electricity meter
- High flexibility: Connection to various smart home systems via SO interface and Modbus RTU
- §14a EnWG control via SG-Ready interface

WP070001

Power distribution WM-S

WP070002

Power distribution WM-M

WP070003

Power distribution WM-L

WP070004

Power distribution WM-XL



Temperature sensor

Cable sensor with protective sleeve and PVC cable

WP070000

Temperature sensor

5 m PVC 2 x 0.25 mm² (black)



Touch-up paint pen

Touch-up paint pen RAL 9005 jet black matt

WP000999

Touch-up paint pen RAL 9005

